



An AIRXCEL Brand

WATER HEATERS

FURNACES

STOW-AWAY STEPS

ACCESSORIES

**YOUR ADVENTURE
STARTS HERE!**



 **Suburban**
An AIRXCEL Brand

FEELS LIKE HOME!

WATER HEATING

Efficiency has a compound name – Suburban Advantage. Suburban leverages in-house expertise to deliver innovation in design and production of storage tank and tankless water heaters. We have one waiting for you.

SUBURBAN ADVANTAGE®

PORCELAIN-LINED STEEL TANK SERIES

The Suburban glass-fused-to-steel process is comparable to residential tank water heater tanks, just a smaller size. Each Advantage water heater has a one-piece, die-formed metal housing that protects controls from weather and a fitted copolymer heat retention jacket encloses the tank. With regular inspection and continuing use of Suburban Extended Life Anode Rods, you may never need to replace your tank again.



DIRECT SPARK IGNITION (D Model)

LP gas operation. Operates with switch on unit or interior mounted ON/OFF Switch

5238A	SW6D – 6 gallon; 12,000 BTU/h
5242A	SW10D – 10 gallon; 12,000 BTU/h
5246A	SW12D – 12 gallon; 12,000 BTU/h

DIRECT SPARK IGNITION with ELECTRIC ELEMENT (DE Model)

LP gas operation plus 1440-Watt Incoloy electric element. Recovery rates: electric-only 6 GPH and electric + LP 16.2GPH. Electric operates with switch on unit and LP gas with interior mounted ON/OFF switch.

5239A	SW6DE – 6 gallon; 12,000 BTU/h
5243A	SW10DE – 10 gallon; 12,000 BTU/h
5247A	SW12DE – 12 gallon; 12,000 BTU/h



DIRECT SPARK IGNITION, ELECTRIC ELEMENT and 12V RELAY (DEL Model)

LP gas operation plus 1440-Watt Incoloy electric element. Recovery rates: electric-only 6 GPH and electric + LP 16.2GPH. Electric AND LP gas operates with interior mounted ON/OFF switch.

5240A	SW6DEL – 6 gallon; 12,000 BTU/h
5244A	SW10DEL – 10 gallon; 12,000 BTU/h
5248A	SW12DEL – 12 gallon; 12,000 BTU/h

SUBURBAN ADVANTAGE® PORCELAIN-LINED STEEL TANK WATER HEATER DOORS

6261APW	Door, Polar White, Radius Corner, 4 & 6 Gallons
6287AEB	Door, Black, Radius Corner, 4 & 6 Gallons
6255ACW	Door, Colonial White, Flush Mount, 4 & 6 Gallons
6255APW	Door, Polar White, Flush Mount, 4 & 6 Gallons
6255AEB	Door, Black, Flush Mount, 4 & 6 Gallons
6259ACW	Door, Colonial White, Flush Mount, 10, 12 & 16 Gal.
6259APW	Door, Polar White, Flush Mount, 10, 12 & 16 Gal.
6259AEB	Door, Black, Flush Mount, 10, 12 & 16 Gal.



DIRECT-FIT UPGRADE PORCELAIN-LINED STEEL TANK SERIES

Replaces competitive aluminum tank water heaters without unsightly side wall modifications. The Suburban Advantage® Direct-Fit Upgrade 6-gallon porcelain lined steel tank water heater lets you change out failed aluminum tank water heaters quickly and easily — without modifying the RV. Designed to fit into the same compartment as competitive pre-2020 model years water heaters using the existing plumbing and connection locations.

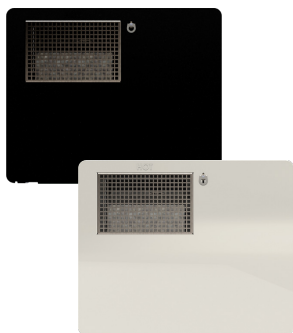


DIRECT FIT WATER HEATERS

LP gas operation. Optional 1440-Watt Incoloy electric element (DE Model). Optional Electric AND LP gas operates with interior mounted ON/OFF switch (DEL Model).

5320A	SAW6D – 6 gallon; 10,000 BTU/h
5321A	SAW6DE – 6 gallon; 10,000 BTU/h + Incoloy Electric Element
5322A	SAW6DEL – 6 gallon; 10,000 BTU/h + Incoloy Electric Element + 12V Relay included

DOOR and SWITCH ARE SOLD SEPARATELY. DOOR IS SHOWN FOR ILLUSTRATION PURPOSES ONLY.



SUBURBAN ADVANTAGE® DIRECT FIT, UPGRADE WATER HEATER DOORS

6279AAW	SAW6D/DE/DEL Door, Arctic White
6279AEB	SAW6D/DE/DEL Door, Black
6279APW	SAW6D/DE/DEL Door, Polar White

ADDITIONAL COMPONENTS

INTERIOR ON/OFF SWITCHES FOR SW AND SAW MODELS

In-cabin switch controls connect power to the burner control board for functioning based on thermostat settings. Additionally, the panel includes a status light that, when lighted, indicates a reset of the system may be necessary.

ON/OFF INTERIOR MOUNTED SWITCH

For D, DE, SAW6D and SAW6DE Models. Switch operates LP gas heating, only. The electric element for DE models is controlled with a dedicated ON/OFF switch located on the heater housing.

234589	White
234229	Black



For DEL and SAW6DEL Models. Operates LP gas and electric element. The electric element is also controllable with an ON/OFF switch located on the heater housing.

232882	White
233111	Black



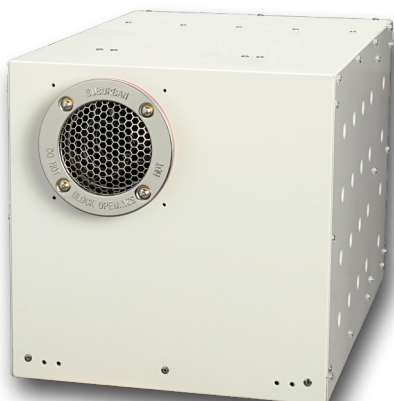
EXTENDED LIFE ANODE RODS

233514	MAGNESIUM - Stainless Steel Core
233516	ALUMINUM - Stainless Steel Core

TANKLESS CONTINUOUS WATER HEATING

Showers, baths, dishes and even the laundry can be done with an infinite supply of hot water whenever and wherever, simultaneously from every fixture.

SUBURBAN ADVANTAGE®



TANKLESS, CONTINUOUS WATER HEATER

Upgrade ANY 6, 10, 12 or 16-gallon RV tank water heater into tankless systems.

Consistent Water Temperature: Microprocessor-controlled, self-modulating, combustion system regulates LP gas input from the 36,000 BTU/h first stage and the 60,000 BTU/h second stage to maintain the desired temperature setting.

Maximum setpoint temp: 130° F.

Dimension: 12.5"H x 12.5"W x 20.5"D.

Weight: 36 lb.

The Suburban Advantage® Tankless, Continuous water heater also has **Active and Passive Freeze Protection**. When the sensor detects water approaching freezing, and LP gas and power are available, the burner intermittently cycles. If gas or power is not available, passive freeze protection allows water to drain.

SUBURBAN ADVANTAGE TANKLESS, CONTINUOUS WATER HEATER

5581A Tankless, continuous water heater

REQUIRED ADDITIONAL COMPONENTS

SUBURBAN ADVANTAGE® TANKLESS REPLACEMENT PANELS

The replacement panel properly aligns and maintains the Vent Cap connection into the heater exhaust port. In conversions, it replaces the existing door. The replacement panel kit contains the mounting frame and panel gasket.

6376APW	Suburban, 6 Gallon Replacement Panel, Polar White
6377APW	Suburban, 10, 12, or 16 Gallon Replacement Panel, Polar White
522147	Dometic/Atwood Style 6 Gallon Replacement Panel, Polar White
522150	Dometic/Atwood Style 10 Gallon Replacement Panel, Polar White



SUBURBAN ADVANTAGE® TANKLESS CONTROL CENTER

Provides precise, informative, consistent and reliable temperature control.

234589 White

234229 Black

ON/OFF INTERIOR MOUNTED SWITCH

Switch operates LP gas heating, only.

234589 White

234229 Black



SUBURBAN ADVANTAGE® EXHAUST VENT CAP

Dual-tube construction exhausts combustion gasses to the outside and draws fresh intake air into the chamber. Vent cap size is determined by the RV wall thickness.

261616 1-Inch Vent Cap for 0"-1" Wall Thicknesses

261617 2-Inch Vent Cap for 1"-2" Wall Thicknesses

261618 3-Inch Vent Cap for 2"-3" Wall Thicknesses



Suburban Advantage® Tankless Water Heaters Feature a 2-Year Limited Warranty. Doors, Control Center, Replacement Panels and Vent Caps Sold Separately.
GAS APPLIANCES MUST BE INSTALLED BY A QUALIFIED SERVICE TECHNICIAN

More options than ever makes Suburban the right fit and best choice!

ST-SERIES TANKLESS WATER HEATERS

Suburban ST42 and ST60 On Demand Water Heaters provide an endless supply of hot water at a controlled temperature as set by the RV owner. The On-Demand feature saves energy by only engaging the burners when water is needed...be it for a hot shower, clean dishes or for hosing off after a day at the beach.

Sized to fit into existing standard 6-gallon water heater side-wall cutouts, the unit comes ready for set-up with an included wall mount digital control center. **Dimensions:** 12 1/2"H x 12 3/4"W x 13"D.

Weight: without door: 19 lbs.; with door: 23.5 lbs.

Designed With a Wide Array of Safety & Protection Features

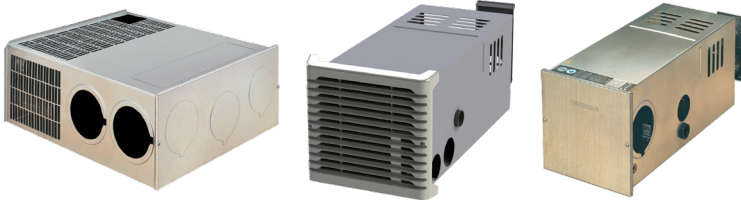
- Two Models Available with the ST42 providing continuous water up to 120 degrees in areas where the intake water is not less than 70 degrees at a flow rate of 1.5 gpm. For climates or areas where the incoming water supply is below 70, or for winter RV use, the ST60 is recommended as the additional heating potential will adequately bring cold intake water up to desired temperatures.
- Flame Out Protection is a safety feature that will cut gas supply immediately due to low propane pressure or burner malfunction.
- Scald Protection is managed through an internal high temperature kill switch to protect against a thermostat malfunction. A child lock prevents outlet temperatures in excess of 122° F.
- Automatic Fan Monitoring cuts gas supply should the air flow or combustion air supply be interrupted.
- Active Freeze Protection from unexpected low temperatures when power and propane are available.
- Pressure Release Safety Valve
- Voltage Protection shuts down the unit if low/high or overcurrent voltage is detected.
- Worry-Free two-year limited warranty.



5381A	ST42 Water Heater, 42,000 BTU/h - Tankless
5382A	ST60 Water Heater, 60,000 BTU/h - Tankless
6285AEB	Exterior Access Door for ST Water Heaters - Black
6285APW	Exterior Access Door for ST Water Heaters - White

HEATING SOLUTIONS

Warm up an inviting coach interior with quiet and dependable heating solutions.



SF-Q SERIES

Efficient, low-profile ducted furnaces with direct spark ignition and sealed, forced-draft combustion. Requires access doors.

2537A	SF-20VHQ, 20,000 BTU/h
2575A	SF-25VHQ, 25,000 BTU/h
2577A	SF-30VHQ, 30,000 BTU/h
2588A	SF-35VHQ, 35,000 BTU/h
2592A	SF-42VHQ, 40,000 BTU/h

SF-Q ACCESS DOORS

6258ACW	Colonial White Access Door
6258APW	Polar White Access Door
6258AEB	Black Access Door

SF-FQ SERIES

Do not require exterior access doors. Efficient, low-profile ducted furnaces with direct spark ignition and sealed, forced-draft combustion.

2572A	SF-20VHFQ, 20,000 BTU/h
2574A	SF-25VHFQ, 25,000 BTU/h
2576A	SF-30VHFQ, 30,000 BTU/h
2587A	SF-35VHFQ, 35,000 BTU/h
2591A	SF-42VHFQ, 40,000 BTU/h

NT-SEQ SERIES

Direct discharge for zone heating of smaller interiors.

2504ABK	NT-20SEQ, 19,000 BTU/h, Black Discharge Grille
---------	--

NT-SQ SERIES

Ducted for even heat distribution.

2450A	NT-20SQ, 19,000 BTU/h
-------	-----------------------

120VAC to 12VDC POWER SUPPLY KIT

For Park Model Installations. Requires SF-42VHFQ Furnace

521464	120VAC to 12VDC Power Supply, Wiring Connectors, Mounting Screws
--------	--



FURNACE CORE REPLACEMENT MODULES

No more removing the furnace cabinet or ductwork.

The Suburban Furnace Core module slides into the existing furnace cabinet saving time and money while providing all the benefits of a new furnace - backed by a two-year limited warranty.

FOR NT-16SEQ / NT-20SEQ MODELS **ORDER 2612A**

FOR NT-16SQ / NT-20SQ MODELS **ORDER 2611A**

FOR NT-30SP / NT-34SP MODELS **ORDER 2613A**

FOR NT-40 MODELS **ORDER 2614A**

FOR PARK MODEL P40 **ORDER 2615A**

FOR SF-20Q **ORDER 2605A**

FOR SF-20FQ **ORDER 2606A**

FOR SF-25Q / SF-30Q **ORDER 2607A**

FOR SF-25FQ / SF-30FQ **ORDER 2608A**

FOR SF-35Q / SF-42Q **ORDER 2609A**

FOR SF-35FQ / SF-42FQ **ORDER 2610A**

THERMOSTATS

161154	Heat Only, White
161210	Heat Only, Black

ACCESSORIES

050715	4" Duct Collar
050733	4-7/8" Duct Cover
051240	2" Duct Collar



ELECTRIC WALL HEATER

Compact (13"W x 5"D x 17"H) unit mounts easily onto a wall, powered by a 6-foot grounded plug. Adjustable heating.

2491ABK	Plug-In, Black
---------	----------------

STOW-AWAY STEPS

Effortless RV access with a sleek, space-saving design that folds away securely, ensuring convenience and stability for every adventure.

Available in 2-, 3-, or 4-step models and two widths, Suburban Stow Away Steps are designed to meet a variety of needs with superior engineering for enhanced safety and ease of use. The fixed-center threshold plate ensures a quick, self-locking installation, while sturdy, non-slip treads and adjustable legs provide a secure, level stepping surface. Lighter than comparable steps, the innovative 'Easy Stow' design allows for effortless deployment and storage.

Don't settle for ordinary—elevate your RV experience with steps that make a statement from the very first step!

- **Quick Adjust Leveling Feet** – Easy operation adjusts the legs at 1/4" increments, allowing for a precise, level step.
- **Legs retract with the push of a button.**
- **Independently Adjustable Legs** – Great for leveling steps for adventures in the outback.
- **Slotted, Non-slip Treads** – Water won't puddle and dirt falls through, keeping the mess from being tracked into the coach. This also helps keep the interior clean when the steps are moved into the stowed position.
- **Easy Stow Latch** – An improvement on standard designs means steps stow quickly and safely.
- **Lighter Than Comparable Steps** – safer and easier to stow.
- **Easy 2-Pin Removal** – at times when the steps need to be removed from the coach, the process is a snap.
- **Fit door widths of 26"-30" (Narrow) and 30"-34" (Wide).**
- **Made in USA.**



TECHNICAL SPECIFICATIONS	2-STEP		3-STEP		4-STEP	
	Narrow	Wide	Narrow	Wide	Narrow	Wide
MODEL NUMBER	4101A	4102A	4103A	4104A	4105A	4106A
Number of Steps	2	2	3	3	4	4
Step Width	20"	23 1/2"	20"	23 1/2"	20"	23 1/2"
Top Step Depth	13"					
Common Step Rise	8 1/2"					
Door Width, (Range)	26" - 30"	30" - 34"	26" - 30"	30" - 34"	26" - 30"	30" - 34"
Opening, Latch Adjustment (Range)	23 1/4" - 28 3/4"	26 3/4" - 32 1/4"	23 1/4" - 28 3/4"	26 3/4" - 32 1/4"	23 1/4" - 28 3/4"	26 3/4" - 32 1/4"
Floor Height (based on leg extension)	19 1/16" - 28 3/16"		27 9/16" - 36 15/16"		36 1/16" - 45 9/16"	
Extension from Coach (Max)	25 5/16"		33 5/16"		41 11/16"	
Width Excluding Latch (Max)	23 1/16"	26 9/16"	23 1/16"	26 9/16"	23 1/16"	26 9/16"
First Step Height (Range)	2 13/16" - 11 15/16"		2 13/16" - 12 1/4"		2 13/16" - 12 1/4"	
Total Deployed Height (Range)	15 11/16" - 24 13/16"		24 3/16" - 33 9/16"		32 11/16" - 42 3/16"	
Height When Stowed	31 9/16"		43 3/8"		55 3/16"	
Depth When Stowed	17 11/16"		19 3/4"		21 13/16"	
Color	Flat Black Powder Coat					
Load Limit	500 lbs					
Total Weight	30 lbs	33 lbs	38 lbs	41 lbs	46 lbs	49 lbs

LP GAS ACCESSORIES

AUTOMATIC CHANGEOVER REGULATORS

Automatically switches from empty service cylinder to full reserve cylinder, ensuring continuous gas flow to appliances. Highly visible full/empty indicator signals refill. The unique indicator is visible from the top when viewed through propane tank cover lid, eliminating the need to remove the entire propane tank cover to view which cylinder is full or empty. UL Listed.

Safety Features:

- Built-in Back Check Valve: Allows empty cylinder removal and refill as reserve cylinder remains operational.
- Overpressure Protection Device: A feature that operates to shut off the flow of gas in case of regulator malfunction when the regulator outlet pressure reaches the limits. Such a feature shall remain closed until it has been manually reset.



Low Capacity:

160,000 BTU/hr., 25-250 PSI

Inlet: 1/4" Inverted Flare

Outlet: 3/8" FNPT

LP-R924

LP-R924-BUL (no packaging)



High Capacity:

450,000 BTU/hr., 25-250 PSI

Inlet: 1/4" Inverted Flare

Outlet: 1/2" FNPT

LP-R528B

TWO-STAGE REGULATORS

A combination regulator; first stage reduces cylinder outlet pressure to 10 psi, and then second stage maintains a stable working pressure of 11" water column.

Safety Features:

- Overpressure Protection Device: A feature that operates to shut off the flow of gas in case of regulator malfunction when the regulator outlet pressure reaches the limits. Such a feature shall remain closed until it has been manually reset.



Vertical Vent

Capacity: 160,000 BTU/hr.

Inlet: 1/4" FNPT

Outlet: 3/8" NPT

LP-R524V



Horizontal Vent

Capacity: 160,000 BTU/hr.

Inlet: 1/4" FNPT

Outlet: 3/8" NPT

LP-R524H



Horizontal Vent

with Excess Flow Device

Capacity: 160,000 BTU/hr.

Inlet: POL with EFV

Outlet: 3/8" FNPT

LP-R524HP

SINGLE STAGE HIGH PRESSURE REGULATOR

The single stage regulator is designed to supply gas appliances functioning at pressure equal to or higher than 0.5 PSI. This regulator will be consequently connected to gas appliances through high pressure flexible hoses. Depending on the versions the outlet fitting may be at 90° or 180° in comparison with inlet fitting.

High Pressure, Fixed

Capacity: 460,000 BTU/hr.

Inlet: 1/4" FNPT

Outlet: 1/4" FNPT

LP-R756HP



HOSES & PIGTAILS

Pigtails are used with Double Stage Automatic Changeover Regulators for two cylinder systems or Standard Two Stage Regulators with "T" check connections

- **Safety Features:**
Excess Flow Device: Limits gas flow in the event of hose rupture or accidental disconnection
- Thermofuse: A heat sensitive plug which shuts off gas flow if temperature reaches above 240°F.



RV High Pressure Hoses

1/4" I.D. Hose, 3/8" FPT x 3/8" Female Flare Swivel



LP-PT72HP	72" PIGTAIL
LP-PT144HP	144" PIGTAIL

RV Quick Connect RV Propane Hose

1/4" I.D. Hose 1/4" Male Quick Connect x 1/4" Female Quick Connect with Shutoff Valve



LP-25FMQD12	12' HOSE
LP-25FMQD24	24' HOSE

RV LP Gas Extension Hose

1/4" I.D. Hose, Male #600 (1"-20) x Female #600 (1"-20)



LP-20UNEF12	12' HOSE
-------------	----------

RV Type 1 ACME Nut Pigtail

1/4" I.D. Hose

Type 1 ACME Nut x 1/4" Inverted Flare

LP-PT12F	12" PIGTAIL
LP-PT15F	15" PIGTAIL
LP-PT15F-BULK (no packaging)	15" PIGTAIL
LP-PT20F	20" PIGTAIL
LP-PT24F	24" PIGTAIL

Type 1 ACME Nut x 1/4" MPT

LP-PT15M	15" PIGTAIL
LP-PT15M-BULK (no packaging)	15" PIGTAIL
LP-PT20M	20" PIGTAIL

BRASS FITTINGS & ACCESSORIES



Excess Flow POL Adapter

For use with Two-Stage Regulators.
Closing flow rate of 404sdh of LPG at 100 PSI.

LP-BPOL	POL x 1/4" MPT
---------	----------------



T Connection

1/4" Inverted Flare x 1/4" Inverted Flare x 1/4" MPT. Used for two cylinder applications.

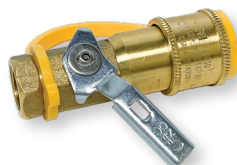
LP-BTCON



Z Wall Mounting Bracket

For use with Two-Stage or Automatic Changeover Regulators. Mounting screws included.

LP-BZMB



Low Pressure Quick Connect

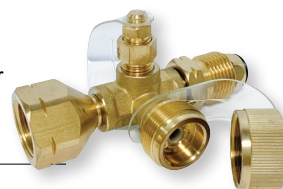
Quickly connect propane appliances to your RV's propane supply.

LP-MQDV

4-Port Propane Tee

Hook up additional appliances or propane cylinders.

LP-POLTEE



TRAVEL IN COMFORT WITH SUBURBAN ON-BOARD

Experience the comforts of home, wherever the road takes you.

With Suburban brand products on board, there's no reason to sacrifice comfort while you travel. From powerful furnaces and reliable water heaters to convenient steps and accessories, our solutions bring residential-style comfort and functionality straight to your RV or trailer. Backed by over 75 years of industry expertise, Suburban products deliver proven performance and innovative features for today's modern RV enthusiast.

Benefits of Choosing Suburban

Discover the comfort, convenience, and confidence that come with Suburban products:

- Comprehensive Comfort Solutions – From powerful RV furnaces and efficient wall heaters to reliable water heaters and durable step systems, our full product lineup is designed to meet your needs on the road.
- The Perfect Fit – We offer the only direct replacement for 6-gallon Atwood/Dometic water heaters—no major modifications required.
- Hassle-Free Protection – Enjoy limited warranty coverage without the extra step of product registration.
- Support You Can Count On – Get peace of mind with industry-leading customer service and a nationwide network of authorized service centers.
- Help When You Need It – Our easy-to-use online locator connects you with trusted dealers and service centers in seconds.
- Legacy of Excellence – With over 75 years of proven expertise, Suburban is a name RV owners know and trust.

Where can you find Suburban products?

Suburban's trusted climate control and water heating systems are found across a wide spectrum of recreational vehicles—from spacious Class A motorhomes and fifth wheels to rugged campervans and toy haulers. Whether you're shopping for a new RV or upgrading your current one, Suburban delivers reliable, performance-driven solutions that enhance every RV lifestyle. Wherever your journey takes you, look for the Suburban name for comfort, quality, and confidence on the road.

Find the dealer closest to you: <https://suburbanrv.com/service-support/service-locator/>

How can I get my Suburban products serviced?

- Whether on the road or at home, easily find the help you need with the Suburban Service Locator (visit the URL above).
- For end users who service their own Suburban products, find operation manuals and product information in our easy to access Documentation Library: <https://suburbanrv.com/service-support/documents/>
- Watch technical and service videos in our video library: <https://suburbanrv.com/service-support/videos/>

For any additional questions about Suburban products, contact us directly: <https://suburbanrv.com/contact/>



Suburban

An AIRXCEL Brand



Airxcel is the leading provider of innovative, high-quality RV and specialty HVAC solutions, powering the industry with trusted brands that enhance comfort, convenience, and performance. From climate control and appliances to roofing, ventilation, and power management, our products are designed to make every adventure more enjoyable.

With a deep commitment to engineering excellence and customer satisfaction, Airxcel continues to drive innovation, providing solutions that make life on the road—and beyond—more comfortable and reliable.



An *AIRXCEL* Brand

Suburban is a trusted name in the RV industry, delivering high-quality heating, water heating and accessibility solutions designed to make every journey feel like home.

Built for performance, reliability, and ease of use, our products ensure that whether you're staying warm, or enjoying hot water on the road, comfort is never compromised. With decades of innovation and a commitment to excellence, Suburban continues to power the comforts of RV living, so travelers can focus on what matters most—exploring with confidence.

676 Broadway Street
Dayton, TN 37321
423.775.2131
www.airxcel.com
www.suburbanrv.com



Specifications, features, and availability are subject to change without notice. Suburban is not responsible for printing errors or omissions. Images may be representative and may not reflect the latest product updates. Please consult your dealer or visit our website for the most current information.